



Base Mounting



Wall mounting

- Sound output adjustable up to 114 dB (C), 110 dB (A)
- 32 tones for a diverse range of applications
- 3 Tones can be triggered externally

i TECHNICAL SPECIFICATIONS:



Dimensions (L x H x W):	109 mm x 112.5 mm x 152 mm
Housing:	PC/ABS-Blend
Connection:	24 V: Screw terminal with wire protection max. 1.5 mm ² 115/230 V: CAGE CLAMP®
Cable entry:	Membrane for cable diameter max. 13 mm
Fixing:	Wall, base and ceiling mounting
Tone types and frequencies:	Selectable via DIP switch, see table on the opposite page

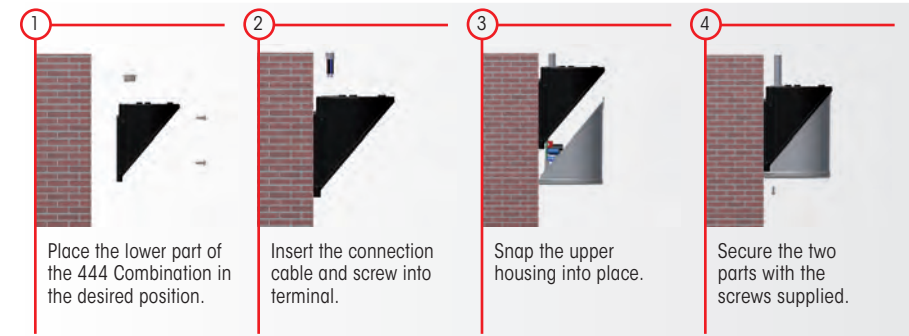
🛒 ORDER SPECIFICATIONS:

Voltage	24 V AC/DC	115 V AC	230 V AC
Current consumption	200 mA	55 mA	30 mA
	144 000 75	144 000 67	144 000 68

🏠 ACCESSORIES:

Cable gland M20 x 1.5 mm (for cable strain relief)	975 444 01
Protection rating IP 65 is provided even without cable gland	

✓ QUICK AND SIMPLE MOUNTING:



⚠️ ADDITIONAL INFORMATION:

The various mounting options (wall, base or ceiling) maximise the sound output of the Multi-Tone Sounder.

📏 TECHNICAL DIAGRAMS:

see page 297



Multi-Tone Sounder in combination with LED Double Flash (Page 211) or LED EVS Signal (Page 212)

See note on page 347

CE	ERC	24 V	115 V / 230 V	IP65	+50°C -30°C	(A) 110 dB	(C) 114 dB	32	24 V	PLC
----	-----	------	---------------	------	----------------	------------	------------	----	------	-----

